

"What now"

SUPPLY ROOM



Ashly "I need a truck with a heater"

WELCOME TO JSA RED BARON SALOON
FINEST IN SOUTH KOREA
 Dining Facility MGN, SEC Walter Thomas

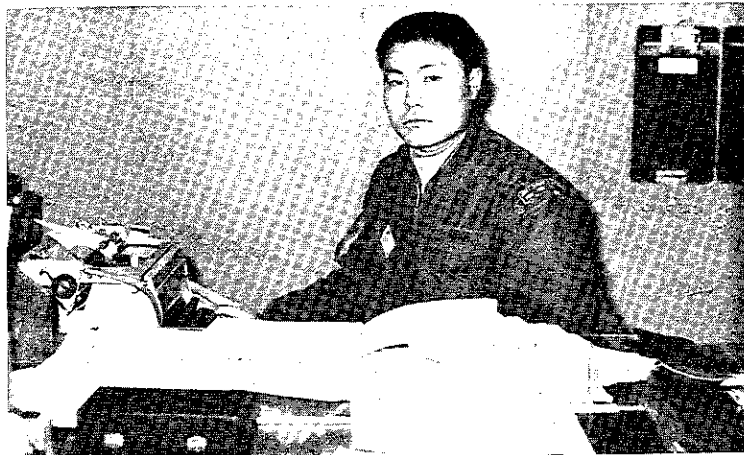
MEAL HOURS
WEEK DAYS

BREAKFAST
 LUNCH
 DINNER
 12:00 - 12:30

WEEK ENDS & HOLIDAY
 BREAKFAST 0800 TO 1100
 LUNCH & DINNER 1330 TO 1630
 NORTH PLT ONLY REGULAR BREAKFAST
STRIVING TO PLEASE YOU.



Look sharp the boss



Don't ask to me and wait!



It might have been a good picture "Sir"



Whom! I am tired

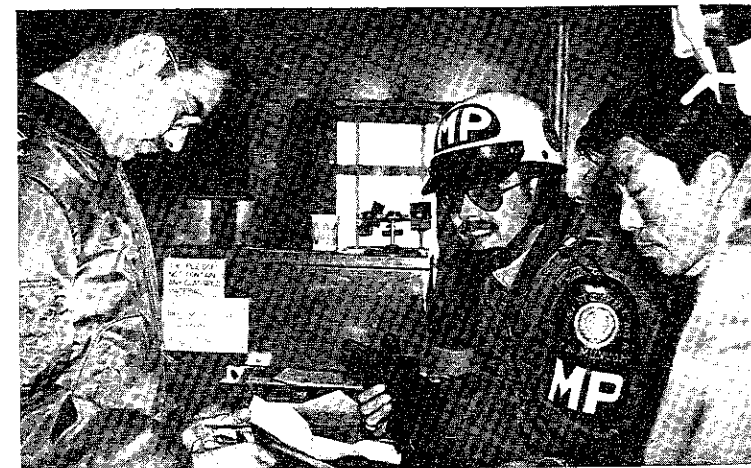


E-5 RAYMOND G. CLOVER
ASST DINING FACILITY MANAGER

The what?



Sgt Son Mr. Kwon SSG Pittman SP4 Fritts



Not another "Visor" I hope!



Boy! Boy! Boy!

